

BAY LAKES BUILDERS

DEVELOPMENT | REALTY | RENOVATIONS

9352 Park Place • PO Box 593
Fish Creek, WI 54212

1411 S. Webster Ave
Green Bay, WI 54301

Ph 920.371.2956 • Fx 920.437.7707
psoletski@baylakesbuilders.com
www.baylakesbuilders.com

- MLS Area** 06-Bailey's Harbor
- Schools** Gibraltar
- Roads** Public Road Paved
- Utilities Available** Electric
Municipal Sewer
High Speed Internet
Satellite TV
Telephone
- Utilities By Owner** Well
LP Gas

Driving Directions:

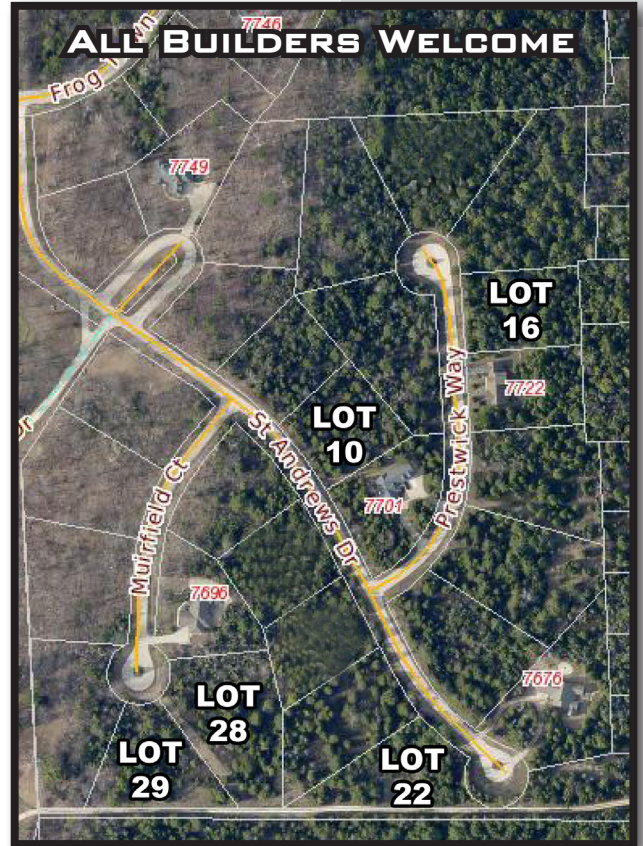
Hwy 57 south of Bailey's Harbor to Frogtown Road east to St. Andrew's Drive to home sites.

THE HIGHLANDS AT MAXWELTON BRAES

HOME SITES STARTING AT **\$42,900**

Beautiful wooded home sites in *The Highlands* by Maxwellton Braes with each one including underground utilities for electric, **municipal sewer**, and telephone. Walking trails, 18-hole championship golf course, Lake Michigan shore, Kangaroo Lake, and downtown Bailey's Harbor are all just a short walk away. All builders are welcome to build your dream home retreat on one of these wooded sites featuring authentic Door County character and natural beauty such

as limestone outcroppings of the Niagara Escarpment. Contact us for more information including restrictive covenants, taxes, and private well system estimates.



Lot	Street	Size	Price	Remarks
10	St. Andrews Ct.	.72 Acres	\$42,900	Site suitable for walkout basement.
16	Prestwick Way	.77 Acres	\$44,900	Site suitable for full basement or crawl.
22	St. Andrews Ct.	.8 Acres	\$49,900	Extra private setting adjacent to Bjorklund of Lawrence University.
28	Muirfield Ct.	1.13 Acres	\$72,900	Extra private setting adjacent to Bjorklund of Lawrence University.
29	Muirfield Ct.	.81 Acres	\$72,900	Extra private setting adjacent to Bjorklund of Lawrence University.

Contact Paul E. Soletski for details | 920.371.2956 | psoletski@baylakesbuilders.com

Information and values herein subject to change without prior notice.

FOR PHOTOS, FLOOR PLANS, TESTIMONIALS, AND MORE - VISIT US AT

WWW.BAYLAKESBUILDERS.COM